



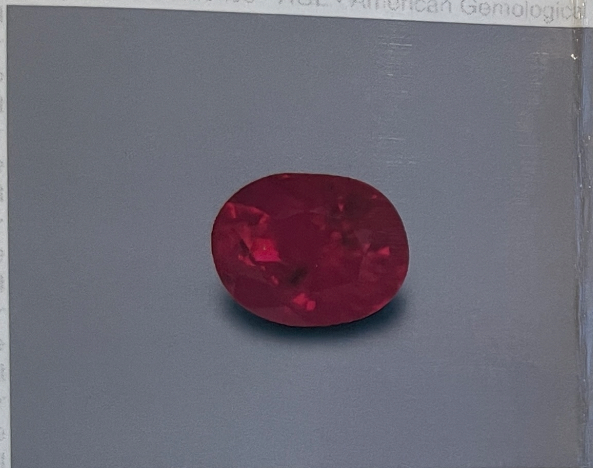
580 Fifth Avenue
Suite 706
New York, N.Y. 10036
Tel: (212) 704-0727
Fax: (212) 764-7614

Colored Stone Grading Report

DOCUMENT NO: **CS 36176**

DATE: **25 March, 2003**

The information contained in this report represents the opinion of American Gemological Laboratories regarding the characteristics of the colored stone(s) submitted for examination. The conclusions expressed are the American Gemological Laboratories' interpretation of the results obtained from gemological instruments and grading techniques designed for this purpose. Conclusions may vary, within reasonable tolerances, due to the subjective nature of colored stone analysis.



IDENTIFICATION: Natural Ruby, Classic Mogok, Burma™

SHAPE AND CUT: Oval Mixed Cut

CARAT WEIGHT: 1.021 Cts.

MEASUREMENTS: 6.03 x 4.92 x 4.13 mm.

COLOR GRADE: ECA¹ 2.5/75*

Color Rating/Tone ECA¹ 2 - 3/75 - 80

Color Scan R₇₀ PK/P₁₅ O₁₅

Light Source Duro-Test: Vita Lite

CLARITY GRADE: MI₁ - MI₂*

CUTTING GRADE: Good (5 - 6)

Depth % 83.9%

Brilliance Range 80 - 100%

Brilliance Average 80 - 90%

FINISH GRADE: Good (5 - 6)

NOTE: All color determinations are subject to the color temperature of the light source and the color sensitivity of the observer. The quality and commercial desirability of any color is determined by examining the interrelationships of ALL factors related to Color Grade, including Color Rating, Tone, and Dichroic Effect. Conclusions may vary, within reasonable tolerances, due to the subjective nature of colored stone analysis. Mounted stones are graded only to the extent that mounting permits examination.

COMMENTS: *Total Quality Integration Rating: Excellent - Very Good. *Based on available gemological information, it is the opinion of the Laboratory that the origin of this material would be classified as Classic Mogok, Burma (Myanmar)™.

*Heat Enhancement: None. *Color Grade based on standard ruby scale: 3.5 - 4/75 - 80. *Faint to moderate texture and faint dichroic effect present. *The image contained in this document is for representational purposes only and is not necessarily actual color or size.

1	2	3	4	5	6	7	8	9	10
Excellent	Very Good	Good	Fair	Poor					

Color Rating (AGL)

Degree of Clarity Enhancement and Rarity Factor™ (AGL)

None	Insignificant	Faint	Moderate	Strong	Prominent
Extremely Rare	Very Rare	Rare	Uncommon	Common	Very Common

1	2	3	4	5	6	7	8	9	10
Excellent	Very Good	Good	Fair	Poor					

Cutting / Proportions / Finish (AGL)

FI	LI ₁	LI ₂	MI ₁	MI ₂	HI ₁	HI ₂	EI ₁	EI ₂	EI ₃
Free of Incl	Lightly Included	Moderately Included	Highly Included	Excessively Included					

Clarity Scale (AGL) (2.5X Magnification)

0	5	10	15	20	25	30	35	40	45	50	55	60	65	70	75	80	85	90	95	100
V. Light	Light	Light-Med.	Medium	Medium - Dark	Dark-V. Dark															

Tone (AGL) (0 = Colorless, 100 = Black)

NOTICE TO CLIENTS:

The client agrees to be responsible for and to protect, indemnify and hold harmless American Gemological Laboratories, Inc., and its officers, directors, and employees from and against any and all injury, loss, damage, destruction or otherwise of said gem materials while in the possession of American Gemological Laboratories resulting from any cause not attributable to the negligence of American Gemological Laboratories or its employees. The client agrees that this report is for his/her exclusive use.

Neither the American Gemological Laboratories nor any of its employees shall be responsible for any action that may be taken on the basis of this report. This document or the name of American Gemological Laboratories, Inc. may not be reproduced in whole or in part without the express, prior written authorization from American Gemological Laboratories. Do not accept copies, alterations or corrections on this document for final transactions.

This report prepared by:

AGL™

American Gemological Laboratories, Inc.

© 1978 American Gemological Laboratories, Inc. Original