

# Gemstone Forecaster

NGC P.O. Box 42468 Tucson, AZ 85733 1-800-458-6453 1-520-577-6222

rgenis@preciousgemstones.com [www.preciousgemstones.com](http://www.preciousgemstones.com)



## Table of Contents

### GIA New Colored Gemstone Report

### Interesting Auction Results

### Orange-Oiled 12.78 Burma Ruby at Sotheby's

### AGL Brazilian Paraiba's Suite

### 3.63 Purplish-Pink Diamond fails to sell

### Burma News Myanmar Gems Trade Loses Shine as Junta Cracks Down on Dealers

### Resistance Tensions Rise as TNLA Prepares to Return Ruby Town to Myanmar Junta

## GIA New Colored Gemstone Report by Robert Genis

GIA has announced a redesigned colored gemstone report, set to launch on January 1, 2026. This update arrives amid lagging demand for white diamond and lab-grown grading reports, as many diamond dealers continue shifting toward colored gemstones to offset declining diamond sales.

At first glance, the new format looks promising. It features a large, high-quality photograph of the stone—a clear upgrade from the old reports' subpar imaging. This could be a direct challenge to AGL, which has long set the standard for superior photography in colored gem reports, but has been declining in imaging the last few years.

Below the photo, the report includes a brief historical overview and key characteristics of the gem. This narrative style feels more consumer-oriented than scientific, totally absent from diamond grading reports. While it may appeal to retail buyers, it comes across as gimmicky to serious collectors.

The core gemological details occupy the right side: weight, measurements, shape, color description, transparency, and cutting style. On the far right, the results panel confirms whether the stone is natural (and in this case, beryl/emerald), its country of origin (e.g., Colombia), and any treatments—such as F1 clarity enhancement.

Historically, GIA colored gem reports were inconsistent on

treatment disclosure, often relying on a generic QR code-linked statement. Now, clarity enhancement appears prominently front and center. While it's unclear if this is optional or required, always demand full treatment details on any GIA-papered stone you're considering. The Clarity Enhancement Chart categorizes treatments as None, No indication of clarity enhancement, Minor, Moderate, or Significant. The "No indication" category raises concerns for high-end collectors, who insist on true "None." I am unsure of the purpose of no indications of clarity enhancement. Is this strictly a gift to the dealer community? Are they saying just a little treatment, so small we cannot even locate? To me, enhancement is like being pregnant. Either you are or you are not. It is either indicated or not.

As a longtime GIA observer, I recall the ColorMaster machine and Munsell-derived systems—ambitious attempts to quantify colored stone grading like diamonds. Sadly, none were ever incorporated into a colored gemstone grading report and never succeeded in the marketplace. We still need more than "the color is green." Will GIA ever deliver a robust, standardized system for colored gemstones? This is a minor improvement, but still not comparable to AGL's full grading report.



### Emerald Origin Report

GIA Report 2231461567

December 09, 2024

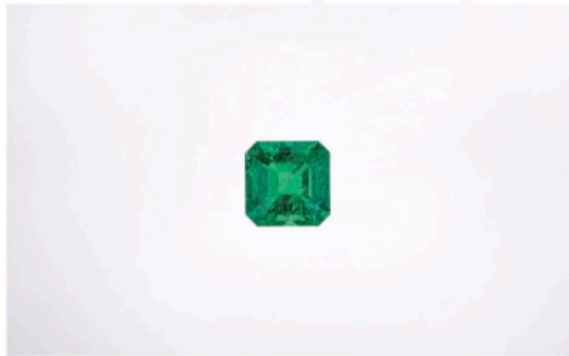


Image is not to scale. Color is approximate.

### Emerald

Emerald is the green variety of the mineral beryl that is colored primarily by chromium. The name comes from the Greek word “smaragdus”, which means green gem. One of the first emerald mines known was in Egypt and was named after Cleopatra. Today, significant sources of emerald include Colombia, Zambia, and Brazil.

### Characteristics

Mineral	Mohs Hardness	Toughness	Birthstone
Natural Beryl	7.5 - 8	Good	May

To learn more about how GIA determines and classifies gemstone origin, go to [reportcheck.gia.edu](https://reportcheck.gia.edu) to view this report.



The results documented in this report refer only to the article described, and were obtained using the techniques and equipment used by GIA at the time of examination. This report is not a guarantee or valuation. For additional information and important limitations and disclaimers, please see [gia.edu/terms](https://gia.edu/terms) or call +1 800 421 7260 or +1 760 603-4560.

©2025 Gemological Institute of America, Inc.

### Details

#### Item Description

One loose stone

#### Weight

8.78 carats

#### Measurements

12.17 x 11.98 x 8.88 mm

#### Shape

Octagonal

#### Color

Green

#### Transparency

Transparent

#### Cutting Style

Step Cut

### Results

#### Species

Natural Beryl

#### Variety

Emerald

#### Geographic Origin

Colombia

#### Additional Results

Clarity Enhanced (F1)

Filler Type: A (may include oil, wax and/or natural resin)

#### Comments

\*\*SAMPLE\*\*SAMPLE\*\*

Any statement on geographic origin is an expert opinion based on a collection of observations and analytical data. Due to their growth conditions in nature and recovery methods, most emeralds contain surface reaching features. For this reason, clarity enhancement is a common trade practice.

### Clarity Enhancement

No Fissures Present	No or Insignificant Clarity Enhancement	Qualification of Clarity Enhancement		
None	No Indications of Clarity Enhancement	F1	F2	F3
		Minor Clarity Enhancement	Moderate Clarity Enhancement	Significant Clarity Enhancement



THE SECURITY FEATURES IN THIS DOCUMENT, INCLUDING THE Hologram, QR Code and Microprint Lines, in addition to those NOT LISTED, SECURE DOCUMENT SECURITY Hologram, Hologram.

## Interesting Auction Results

### US\$1.3 Million for an Orange-Oiled 12.78 Burma Ruby at Sotheby's's High Jewelry Auction

You never know what someone will splurge on for Christmas. On November 12, Sotheby's High Jewelry auction in Geneva concluded with a bang: a 12.78 ct Burmese ruby—we describe as “heavily included”—hammered for over \$1.3 million (including buyer's premium).

### The Stone at a Glance

- Weight: 12.78 ct
  - Origin: Burma (Myanmar), no heat treatment
  - Color: Medium-to-strong saturation
  - Clarity: Heavily included, with a critical twist...
- When I first saw the gem photographs, the color

is a stunning pinkish-red. However, its clarity reminds me more of the clarity of a Colombian emerald than a Burma ruby. Once you read the Comments section of the SSEF report, alarms go off.

### The Red Flag: “Orange Filler in Fissures”

SSEF's comment reads:

"Minor amount of orange filler in fissures at time of treating."

### Let's decode that:

- “Minor” is lab-speak that's often generous. In the trade, it can mean anything from a trace to “super-juiced.”
- “At time of treating” implies the oil was added during cutting. How do they know? No time machine required—just a convenient way to make the oil process sound normal. We often

hear, "It's just the oil from the wheel while cutting." If you believe that line, I have some land in Florida to sell you.

- Orange oil is typically used to mask fissures and boost apparent clarity. Without it, this stone's inclusions would likely render it opaque in patches and definitely drop in desirability.

### Bottom line:

You cannot accurately grade clarity with filler in place. Acetone testing (to dissolve the oil) is the only way to reveal the stone's true state. Shockingly, Sotheby's didn't require it.

### Auction Surprise

- Estimate: \$440,000–\$700,000

- Hammer Price: ~\$1.3 million (nearly 3x low estimate, 2x high)

In a rational market, a heavily treated, heavily included ruby wouldn't touch these numbers. But provenance, rarity hype, and holiday FOMO can override logic.

We'd never touch a stone with this comment. The risk of post-purchase "filler evaporation" (and clarity looking visually worse) is too high. Obviously, the only reason to fill a gemstone is to make the clarity look better. Think emeralds. For collectors: demand acetone-cleaned stones and recent independent lab clarity verification before bidding.

Caveat emptor—especially at seven figures.



### Gemstone Report No. 147453

Weight:	12.781 ct
Shape & cut:	antique cushion, brilliant / step cut
Measurements:	14.23 x 10.88 x 8.31 mm
Colour:	red of medium strong saturation
Identification:	<b>RUBY</b> (variety of natural corundum)
Comments:	The analysed properties confirm the authenticity of this transparent ruby.  No indications of heating. Minor amount of orange oil in fissures at the time of testing.  Origin: Burma (Myanmar)



Burma ruby ring, courtesy of Sotheby's

**Important Notes:** The conclusions on this Gemstone Report reflect our findings at the time it is issued. A gemstone could be modified and/or enhanced at any time, using different possible treatments (incl. heating, fissure filling, irradiation etc.). It is possible that a later re-examination of the gemstone may lead to different opinions, should the applicable scientific standards for the examination change subsequent to the examination of the gemstone by SSEF. The fact that a particular method or treatment is not specifically mentioned in a report does not mean that such treatments or methods were not used with respect to the particular gemstone. Therefore, the SSEF can at any time reassess if a stone is in accordance with the Gemstone Report. Once verified on [www.myssef.ch](http://www.myssef.ch), only the report with the valid original signatures, embossed stamps and Proof Tag™ label affixed on to the surface of the laminated report is a valid document. PDF scans and copies of a Gemstone Report are not legally binding. See terms and conditions on reverse side and [www.ssef.ch/terms-conditions](http://www.ssef.ch/terms-conditions). © This Gemstone Report is copyright of SSEF.

SWISS GEMMOLOGICAL INSTITUTE – SSEF

Basel, 15 July 2025 tg

  
Dr. W. Zhou, FGA

Detailed description of reports: [www.ssef.ch/reports](http://www.ssef.ch/reports)  
Mandatory report verification: [www.myssef.ch](http://www.myssef.ch)



  
P. Lefèvre, MSc, DUG



## The Prestige Gemstone Report™

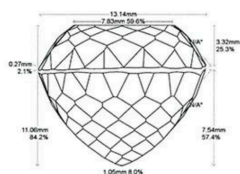
American Gemological Laboratories™

AGL



Images do not accurately portray size or color.

Accu-Vu™ Imaging:



Comments:

General Report Comments:

American Gemological Laboratories  
580 Fifth Avenue • New York, NY 10036 • 212.704.0727 • www.aglglab.com  
(Please see the back of this document for important disclaimer information) © 2025 AGL

Document No: 1150953 Validation Date: 30 September 2025

Identification  
Mineral Type: Natural Tourmaline  
Variety: Paraiba  
Transparency: Transparent  
Color Description: Greenish Blue

Carat Weight: 13.54 cts  
Measurements: 14.32 x 13.14 x 11.06 mm  
Shape: Triangular  
Cutting Style: Modified Brilliant Cut

Comments: Paraiba is a trade term/color variety applied by the AGL to the copper-bearing variety of elbaite tourmaline, which was first discovered in the Paraiba state of Brazil.

Origin  
Provenance: Classic™ Brazil

Comments: Based on available gemological information, it is the opinion of the Laboratory that the origin of this material would be classified as Classic™ Brazil.

Enhancement  
Standard: See comments  
Stability Index: Color Stability: Excellent  
Additional: None

Comments: This color variety of tourmaline is commonly the result of a relatively low temperature heating process.

1	2	3	4	5	6	7	8	9	10	None	Insignificant	Minor	Moderate	Strong	Prominent
Excellent	Very Good	Good	Fair	Poor	Extremely Rare	Very Rare	Rare	Uncommon	Common	Very Common					

Enhancement Stability Index™

Degree of Clarity Enhancement & Relative Rarity™

*M. Chaipaksa*  
Monusdee Chaipaksa, Senior Gemologist

*Christopher P. Smith*  
Christopher P. Smith, President



American Gemological Laboratories™  
America's first and most highly respected origin lab.

Founded in 1977,  
AGL is an internationally recognized gemstone  
testing facility, specializing in comprehensive  
colored stone analyses.

AGL has the distinction of being the  
first laboratory in the United States to issue  
Country-of-Origin reports. Our company and its  
principals have a long tradition of research into the  
detection of and reporting on gem identification-  
and-classification, gemstone treatments and  
provenance determinations.

Our staff is composed of experts in the field  
of gemstone testing and reporting. Our findings  
reflect the latest knowledge and analytical  
techniques to ensure the highest standards  
are applied on every stone we test.

AGL's testing and reporting  
methodology provide you with unsurpassed quality  
and reliability. We are committed to providing  
the highest level of service and reporting  
that our clients and the industry have  
come to expect from the AGL.

## Record-Breaking Brazilian Paraiba Tourmalines Shine at Christie's Magnificent Jewels

In a stunning turn of events at Christie's Magnificent Jewels auction on December 10, 2025, a magnificent Brazilian Paraiba tourmaline suite stole the show—and set a new world auction record for a Brazilian Paraiba gem.

The top lot was a breathtaking Tiffany & Co. necklace featuring a 13.54-carat triangular modified brilliant-cut Paraiba tourmaline, surrounded by a cascade of round, pear, and square-shaped diamonds. From the esteemed collection of prominent art collectors and philanthropists Max and Cecile Draime, this piece soared to \$4,223,000 (including fees) after intense bidding in the room, online, and on the phones. That's over ten times its low estimate of \$400,000–\$600,000, and it delivered a record-breaking \$311,000+ per carat—proving that Paraiba tourmalines can outshine even the most prized colored diamonds.



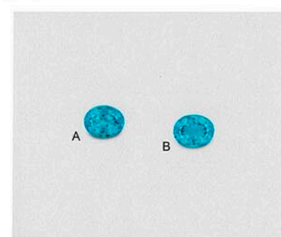
Paraiba necklace, courtesy of Christie's



## The Prestige Gemstone Report™

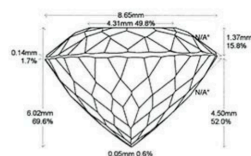
American Gemological Laboratories™

AGL



Images do not accurately portray size or color.

## Accu-Vu™ Imaging:



Comments:

## General Report Comments:

American Gemological Laboratories  
580 Fifth Avenue • New York, NY 10036 • 212.704.0727 • www.aglgemlab.com  
(Please see the back of this document for important disclaimer information) © 2025 AGL.

Document No: 1150952 A and B      Validation Date: 30 September 2025

**Identification**

Mineral Type: Natural Tourmaline      Transparency: Transparent  
Variety: Paraiba      Color Description: Green - Blue

Carat Weight: 3.45 and 3.19 cts      Shape: Oval  
Measurements: 10.74 x 8.65 x 6.02 mm and 10.87 x 8.65 x 5.33 mm      Cutting Style: Modified Brilliant Cut

Comments: Two gemstones with a total weight of 6.64 cts. Matched Pair Rating™: Excellent  
Paraiba is a trade term/color variety applied by the AGL to the copper-bearing variety of elbaite tourmaline, which was first discovered in the Paraíba state of Brazil.

**Origin**

Provenance: Classic™ Brazil

Comments: Based on available gemological information, it is the opinion of the Laboratory that the origin of this material would be classified as Classic™ Brazil.



**Enhancement**

Standard: See comments      Additional: Clarity enhancement: None

Stability Index: Color Stability: Excellent

Comments: This color variety of tourmaline is commonly the result of a relatively low temperature heating process.

1	2	3	4	5	6	7	8	9	10	None	Insignificant	Minor	Moderate	Strong	Prominent
Excellent	Very Good	Good	Fair	Poor	Extremely Rare	Very Rare	Rare	Uncommon	Common	Very Common					

Enhancement Stability Index™

Degree of Clarity Enhancement &amp; Relative Rarity™

*M. Chaipaksa*  
Monudee Chaipaksa, Senior Gemologist

*Christopher P. Smith*  
Christopher P. Smith, President



**American Gemological Laboratories™**  
America's first and most highly respected origin lab.

Founded in 1977,  
AGL is an internationally recognized gemstone testing facility, specializing in comprehensive colored stone analyses.

AGL has the distinction of being the first laboratory in the United States to issue Country-of-Origin reports. Our company and its principals have a long tradition of research into the detection of and reporting on gem identification-and-classification, gemstone treatments and provenance determinations.

Our staff is composed of experts in the field of gemstone testing and reporting. Our findings reflect the latest knowledge and analytical techniques to ensure the highest standards are applied on every stone we test.

AGL's testing and reporting methodology provide you with unsurpassed quality and reliability. We are committed to providing the highest level of service and reporting that our clients and the industry have come to expect from the AGL.

About Us

Accompanied by an AGL Prestige Gem Report, the 13.54 was described as greenish blue (blue as the primary hue, green secondary), classic Brazilian material with low-heat treatment and excellent stability. True vintage Brazilian Paraibas like this are legendary for their intense saturation and inner "glow"—a neon-like brilliance that's hard to match from later sources.

**Matched Pair**

The excitement didn't stop there. The suite also included a perfectly matched pair of Tiffany & Co. earrings set with oval Paraiba tourmalines weighing 3.45 and 3.19 carats (total 6.64 carats). These beauties, also from the Draime collection and graded by AGL (one with a Prestige report), achieved Excellent matching and sold for \$1,270,000—again exceeding ten times their high estimate of \$180,000, or roughly \$195,000 per carat.

The AGL reports noted a green-blue color balance (roughly 50/50, akin to colored diamond grading), with the same desirable low-heat treatment for stability. These stones hail from the original Brazilian deposits, prized by collectors for decades.

What made these results so extraordinary? The low reserves sparked a true bidding frenzy, highlighting the surging demand for rare, untreated or minimally treated classic Brazilian Paraiba tourmalines from old collections. As Christie's noted, tourmaline was the surprise star of the entire \$46.5 million sale.

For gem enthusiasts, this auction reaffirms why these electric gems remain among the most coveted in the world—rare, radiant, and now setting new benchmarks.



Paraiba earrings, courtesy of Christie's



GIA®

## GIA NATURAL COLORED DIAMOND REPORT

August 14, 2025

Report Type ..... Grading Report

GIA Report Number ..... 2145381837

Shape and Cutting Style ..... Cut-Cornered Rectangular

Measurements ..... 8.66 x 8.16 x 5.63 mm

Carat Weight ..... 3.63 carat

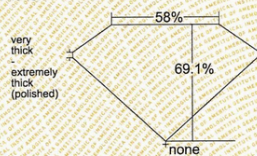
Color Grade ..... Fancy Vivid Purple-Pink

Color Origin ..... Natural

Color Distribution ..... Even

Clarity Grade ..... I2

Proportions:



Profile not to actual proportions

Polish ..... Good

Symmetry ..... Good

Fluorescence ..... Medium Blue

Inscription(s): GIA 2145381837

Comments: Clouds, pinpoints and surface graining are not shown.

GIA.edu

GIA REPORT  
2145381837

Verify this report at GIA.edu

## ADDITIONAL INFORMATION

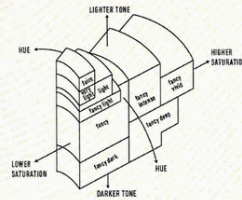
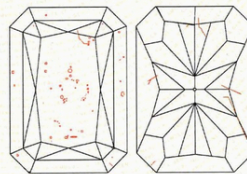
GIA COLORED  
DIAMOND  
SCALE

Illustration of GIA fancy color grade interrelationships

GIA CLARITY  
SCALE

FLAWLESS
INTERNALLY FLAWLESS
VVS <sub>1</sub>
VVS <sub>2</sub>
VS <sub>1</sub>
VS <sub>2</sub>
S <sub>1</sub>
S <sub>2</sub>
I <sub>1</sub>
I <sub>2</sub>
I <sub>3</sub>

## CLARITY CHARACTERISTICS



## KEY TO SYMBOLS\*

- Crystal
- Feather
- Needle
- Extra Facet

\* Red symbols denote internal characteristics (inclusions). Green or black symbols denote external characteristics (blemishes). Diagram is an approximate representation of the diamond, and symbols shown indicate type, position, and approximate size of clarity characteristics. All clarity characteristics may not be shown. Details of finish are not shown.



reportcheck.gia.edu



The results documented in this report refer only to the diamond described, and were obtained using the techniques and equipment available to GIA at the time of examination. This report is not a guarantee or valuation. For additional information and important limitations and disclaimers, please see GIA.edu/terms or call +1 800 421 7250 or +1 760 603 4500. ©2024 Gemological Institute of America, Inc.

THE SECURITY FEATURES IN THIS DOCUMENT, INCLUDING THE HOLOGRAM, SECURITY SCREEN AND MICROPRINT LINES, IN ADDITION TO THOSE NOT LISTED, EXCEED DOCUMENT SECURITY INDUSTRY GUIDELINES.



2011726773

### 3.63 Fancy Vivid Purple-Pink Fails to sell at Sotheby's

The headline lot in Sotheby's December 11, 2025, Fine Jewelry auction in New York was an unmounted, cut-cornered rectangular modified brilliant-cut, 3.63 carat fancy vivid purple-pink diamond (approximately 50% purple and 50% pink). Certified by GIA, it carried the ultra-rare vivid designation and a pre-sale expectation of at least \$1.5 million (over \$400,000 per carat). Despite the hype, the stone went unsold, contributing to an overall sale total of \$11.8 million.

In colored diamonds, clarity is rarely the deal-breaker—inclusions often play a role in producing those coveted hues, and intensity of color reigns supreme. However, there's a threshold. In this case, the eye-visible black inclusions were likely too prominent for bidders to commit to seven figures.



Fancy vivid purple-pink diamond, courtesy of Sotheby's



## Burma News

### Myanmar Gems Trade Loses Shine as Junta Cracks Down on Dealers The Irrawaddy December 9, 2025

*You can even be arrested for dealing gems in Burma now. Not good for the worldwide demand for Burmese gems. Seems only the Chinese can obtain some of these rare stones. ED*

Gem traders in major cities like Yangon, Mandalay, and Sagaing are being repeatedly summoned and interrogated by the military regime over alleged links to resistance groups, according to industry sources.

Business owners said the junta's President's Office recently sent warning letters to local associations and traders via the Union of Myanmar Federation of Chambers of Commerce and Industry (UMFCCI).

The letters warn gem traders to avoid contact with resistance organizations and to report any information about anti-regime activities immediately, a gems trader told The Irrawaddy.

"Authorities question us whenever they feel like it, but so far there have been no arrests."

The interrogations have forced traders to exercise caution in doing business. The junta claims the questioning is part of efforts to combat money laundering, but merchants say the real focus is on whether they are supporting resistance groups.

A Mandalay-based trader explained: "Sometimes they call us under the pretext of a meeting. Sometimes, officials ask us by name to come to their office for a short inquiry. It doesn't happen regularly, but we are very careful in our dealings now."

In February 2022, the junta detained more than 460 people, including over 100 Chinese nationals, and charged them under the Gemstone Law with conducting online jade sales outside official markets.

In August that same year, gem magnate Kyaw Thu Ya, vice-chair of the Myanmar Gems and Jewelry Entrepreneurs Association, was arrested for allegedly supporting the shadow National Unity Government and its armed wing,

the People's Defense Force. The regime seized his assets worth nearly 12 billion kyats in Mandalay, Hpakant, and Naypyitaw.

The scrutiny is not limited to gems traders. Fuel, rice, cooking oil, gold, and foreign currency dealers have also been frequently questioned under the pretext of "measures to stabilize the market".

Trade was sluggish at the 60th Myanmar Gems Emporium, held by the regime in Naypyitaw from November 17 to 26. Traders said only around 4,500 of the 5,200 jade lots displayed were sold out, citing limited supply from conflict-hit mining areas including Kachin and Mogok.

"Gemstones from Kachin can no longer be supplied to Mandalay. So, traders have to go to the places where they can buy gemstones," said one trader. "Most of the buyers were Chinese. Local traders from Mandalay and Sagaing were few."

Merchants said many stones are now being exported directly over the border to China because of security concerns along routes to domestic markets.

### Resistance Tensions Rise as TNLA Prepares to Return Ruby Town to Myanmar Junta The Irrawaddy by Thura Maung November 27, 2025

*The resistance to the junta loses Mogok. The fighter bombing and drone campaigns were too dangerous to the people of Mogok. Another troubling event for the future of Burmese gems. Do not expect any new goods for the foreseeable future. Most residents have abandoned Mogok for other towns or crossed into Thailand. ED*

The Ta'ang National Liberation Army (TNLA) withdrew its administration and licensed gem-mining companies from Mogok in Mandalay Region on Tuesday, as it prepares to hand back Myanmar's ruby town to junta forces this weekend.

Nearly all TNLA-run departments—including health, education, judiciary, forestry, fire services, and municipal offices—have



transferred out of the town, leaving only administrative and police units in place until the handover, a source close to the ethnic army told The Irrawaddy.

"All the offices in Mogok were moved to Namhsan yesterday. Administrators and police will remain in town to keep order until the transfer to the regime is completed," the source said on Wednesday.

Gem-mining companies licensed by the TNLA have also left the ruby-mining hub, bringing all operations to a halt, a local businessman said. Mining companies linked to TNLA allies—the United Wa State Army (UWSA) and the Myanmar National Democratic Alliance Army (MNDAA)—have also withdrawn, relocating machinery to TNLA-controlled Monglon town in Kyaukme Township, over the border in northern Shan State.

TNLA battalions previously stationed in Mogok have been pulled back to rear bases, though some units remain deployed in surrounding areas to monitor the handover. Troops are reportedly positioned to guard the approaches to Monglon, about an hour southeast of Mogok. TNLA-led forces seized Mogok in July last year during the second phase of Operation 1027, in a battle notable for the presence of resistance groups from the Bamar heartland.

Resistance sources said the junta is expected to reenter Mogok and Mongmit, just across the

border in northern Shan State, on Sunday and Monday, under a China-brokered agreement.

Hundreds of junta troops have arrived at a crucial junction about 24 km from Mogok, along the road from Nawnghkio. With only one TNLA unit controlling the stretch between the junction and Mogok, observers expect junta troops to move in soon.

Following reports of the TNLA's pullout, the shadow National Unity Government set up an emergency command unit to direct its resistance groups in Mogok and Mongmit. How the allied resistance groups will react to the handover remains unclear.

Meanwhile, Kachin Independence Army (KIA) units have advanced close to Mongmit, prompting the TNLA to reinforce security. Both ethnic armies took part in the anti-regime Operation 1027 but have since competed for control of overlapping territory seized from the regime.

Most Mogok and Mongmit residents have fled to Mandalay and northern Shan towns ahead of the junta's return, leaving the towns eerily deserted, said a local man who left Mogok on Sunday.

The TNLA announced on October 29 that it had agreed to withdraw from the two towns following China-brokered ceasefire talks with the junta. However, the group has not commented on the planned handover.

The information provided in this newsletter has been derived from research and sources believed to be reliable. However, no guarantee is expressed or implied as to their validity. Opinions included herein are subject to change without notice. The gem market is speculative and unregulated. Certification does not eliminate all risks associated with the grading of gems. Recommendations are meant for those who are financially suited for the risks involved. Past performance is not a guarantee of future performance. Neither NGC nor The Gemstone Forecaster guarantee a profit or that losses may not be incurred as a result of following its recommendations. They may also hold positions in areas they recommend. Subscribers should not view this publication as investment advice, nor is it intended as an offer or solicitation with respect to the purchase or sale of any security.

**Write:**

**GFN**

**P. O. Box 42468**

**Tucson, AZ 85733**

**Call: 1-(800)-458-6453**

**1- (520) 577-6222**

**Name** \_\_\_\_\_

**Address** \_\_\_\_\_

**City** \_\_\_\_\_

**State** \_\_\_\_\_ **Zip** \_\_\_\_\_

**( ) I like the Gemstone Forecaster.**

**Please send it to me for one year (four issues) for \$49.**

**Canadian orders send \$69 (US).**

**International orders send \$79.00 (US).**

**( ) I have gems I want to liquidate.**

**Enclosed find copies of my AGL or GIA grading reports.**

**( ) I want to put together a gem portfolio.**

**Please call for a no-obligation consultation.**